

## Exceed onDemand® Empowers Fairchild Semiconductor

Fairchild Semiconductor, The Power Franchise®, is the leading global supplier of high performance products that efficiently convert, control and condition power.

Fairchild offers the broadest portfolio of components for use in every conceivable electronics application from cell phones and PDAs to plasma screens and PCs.

The company is always on the lookout for ways to get an edge on the competition, by working faster, smarter and more efficiently. Tools that can provide that edge are highly valued by the organization and its employees. The mobility, performance and management functionality offered by Exceed onDemand, a powerful, ultra-thin multi-tiered PC X server, fits well into this philosophy.

“Design wins are made or broken by hours sometimes,” says David Joy, CAD/Systems Engineer, at Fairchild Semiconductor, emphasizing the importance of getting to the finish line first in the semiconductor business.

“A customer may ask three or four competitors to design a device for a specific application, and the first one to bring it to market with the right specifications is the one that wins the contract. It can be a risk since there are potentially millions of dollars of investment in every part”

Joy became convinced that Exceed onDemand would benefit Fairchild when he first saw the solution at the Design Automation Conference. “I brought back a demo kit. Once we got it set up and running, I quickly realized this was a product we wanted to continue with.” He’s been championing Exceed onDemand ever since.

### Mobility a Major Productivity Enhancement

Design engineers at Fairchild, much like any similar workplace, spend time initiating and running multiple simulations of circuit integrations. The simulations can take hours to complete, sometimes running over the course of several days. This makes it vital for engineers to know as soon as possible if there are any problems with a simulation so corrections can be made and restarted. Not a big issue when the engineer is sitting at his or her desk at the office, but if a simulation derails in the evening or over the weekend, often no one finds out about it till the next morning. Exceed onDemand eliminates this productivity gap with its unique Suspend and Resume feature allowing engineers to continue monitoring simulations on evenings, or weekends, without having to go back to the office.

“Exceed onDemand is a productivity enhancer. A simulation can run for hours or days,” says Joy. “With the Suspend and Resume feature, engineers can set up the simulation, suspend the session, and go home for the night. At home, they can quickly connect in over the web after dinner to take a look at the simulations, make adjustments or end the simulation and start a new one with different parameters.”

*“The benefits of having the Suspend and Resume feature in Exceed onDemand can’t be found anywhere else.”*

**David Joy,**  
CAD/Systems Engineer, Fairchild  
Semiconductor

#### Industry

Technology, Semiconductors

#### Customer

Fairchild Semiconductor

#### Business Challenges

- Finding newer, better ways of working in a highly competitive industry

#### Business Solution

Exceed onDemand®

#### Business Benefits

- Using Exceed onDemand shaves crucial hours and even days off of design cycles, enabling Fairchild to maximize design simulations time
- Savings in start-up and ongoing human resource and hardware costs can add up to hundreds of thousands of dollars

"Weekends are even more crucial. No one wants to come in to work on a weekend, but they don't mind spending ten minutes checking on a simulation from home. That way, the company can save two days of potential lost time if a simulation does need to be restarted over the weekend," adds Joy.

Suspend and Resume also has its uses within the office. "For instance if an engineer has to go to a meeting, where a simulation they are running might come up for discussion, they can suspend the session, go to a conference room, and show the simulation to someone else, all they have to do is resume the session remotely," says Joy.

"This tool helps us keep our design simulations on track, an essential element in getting our products to market quickly," he adds.

### Remote Management Allows Worldwide Deployment at Significant Cost Savings

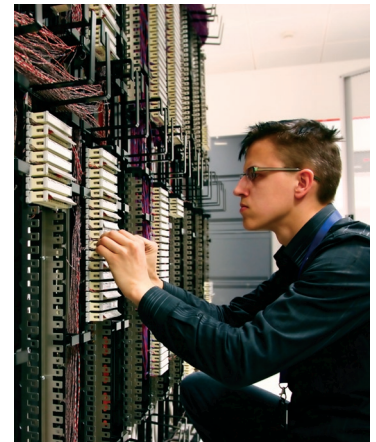
Another advantage of Exceed onDemand is it allows Fairchild to efficiently operate remote design centers, potentially saving travel costs. Over the past year, the company has set up a number of remote design centers in several states on the east coast to complement those already in place. Exceed onDemand has been installed on company servers in several US locations and is deployed and managed from Maine. The only things the company needs to provide the engineers at the remote locations are a laptop or desktop computer and an Internet connection.

"Instead of hiring an IT person to be at every site that has a handful of engineers, we give each engineer an account on our main system and they come in over the Internet to do all of their design work," says Joy. "That represents a savings for us. We've been able to reduce our costs in support resources and a lot of hardware too. In our scenario all we need are laptops or workstations for the users and a good network connection back to the mother ship if you will."

Joy estimates that savings could be substantial. "Consider in this cost savings equation the IT persons salary per year, plus potential saving to purchase servers and other network gear and infrastructure costs. Add that up, and the saving could be significant," he says.

### Unrivalled Performance Wows Users

"Exceed onDemand far out performs any other product we've used before, especially over low bandwidth connections," says Joy. "Hands down, Exceed onDemand beats everything over a slower network. I can start a Cadence session from my desk in Maine (the software resides on a server in another part of the country) and it's almost like being there. It's remarkable compared to what it was like before we deployed Exceed onDemand."



**"I tell everybody about Exceed onDemand all the time. I say 'it's really good, you've got to try it,'" says Joy. "Exceed onDemand definitely meets our needs."**

Though there are only several dozen users at the moment, Joy sees potential for growth, mainly because as other departments see Exceed onDemand in action, they inquire about their own rollouts. "Other Fairchild organizations have caught wind of this," he says.



#### Sales & Support

Canada  
38 Leek Crescent,  
Richmond Hill, Ontario, L4B 4N8  
Phone: 1 905 762 6400  
Fax: 1 905 762 6407  
Toll Free: 1 877 359 4866

www.hummingbird.com  
getinfo@hummingbird.com  
support@hummingbird.com  
North America Support  
1 800 486 0095  
Worldwide Support  
1 905 762 6400

#### Corporate Head Office

www.opentext.com  
sales@opentext.com  
North America Sales  
1 800 499 6544  
International Sales  
+800 4996 5440

If you're a Hummingbird® partner or customer, visit [www.hummingbird.com](http://www.hummingbird.com) or [online.opentext.com](http://online.opentext.com) for more information about this and other Open Text solutions. Open Text is a publicly traded company on the NASDAQ (OTEX) and the TSX(OTC).

Copyright © 2008 Hummingbird Ltd. All other trademarks or registered trademarks are the property of their respective owners. All rights reserved. Hummingbird® The Open Text Connectivity Solutions Group. Printed in Canada. S\_M\_SSEoDFAIR\_E\_20061101

